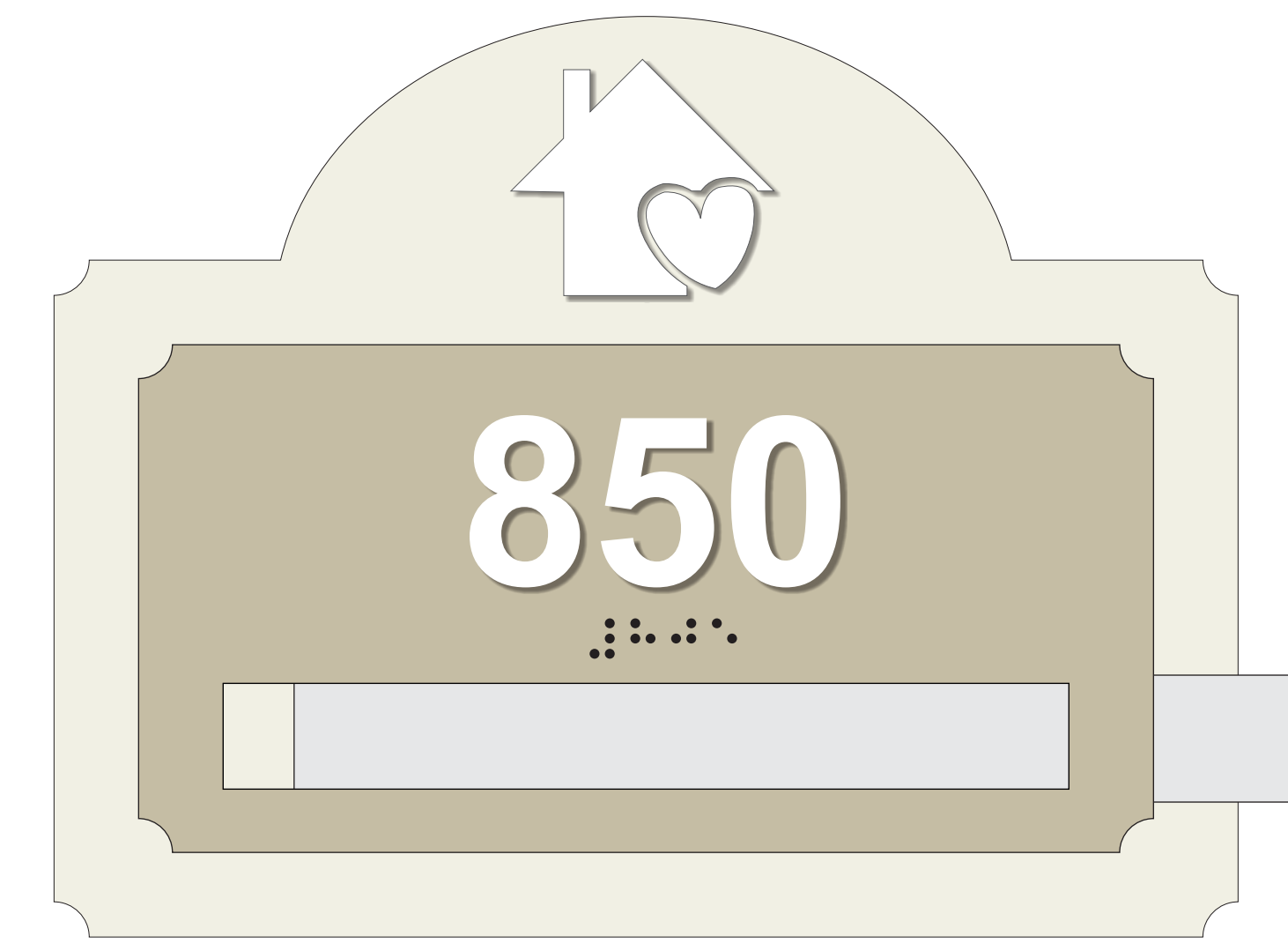


850 Series

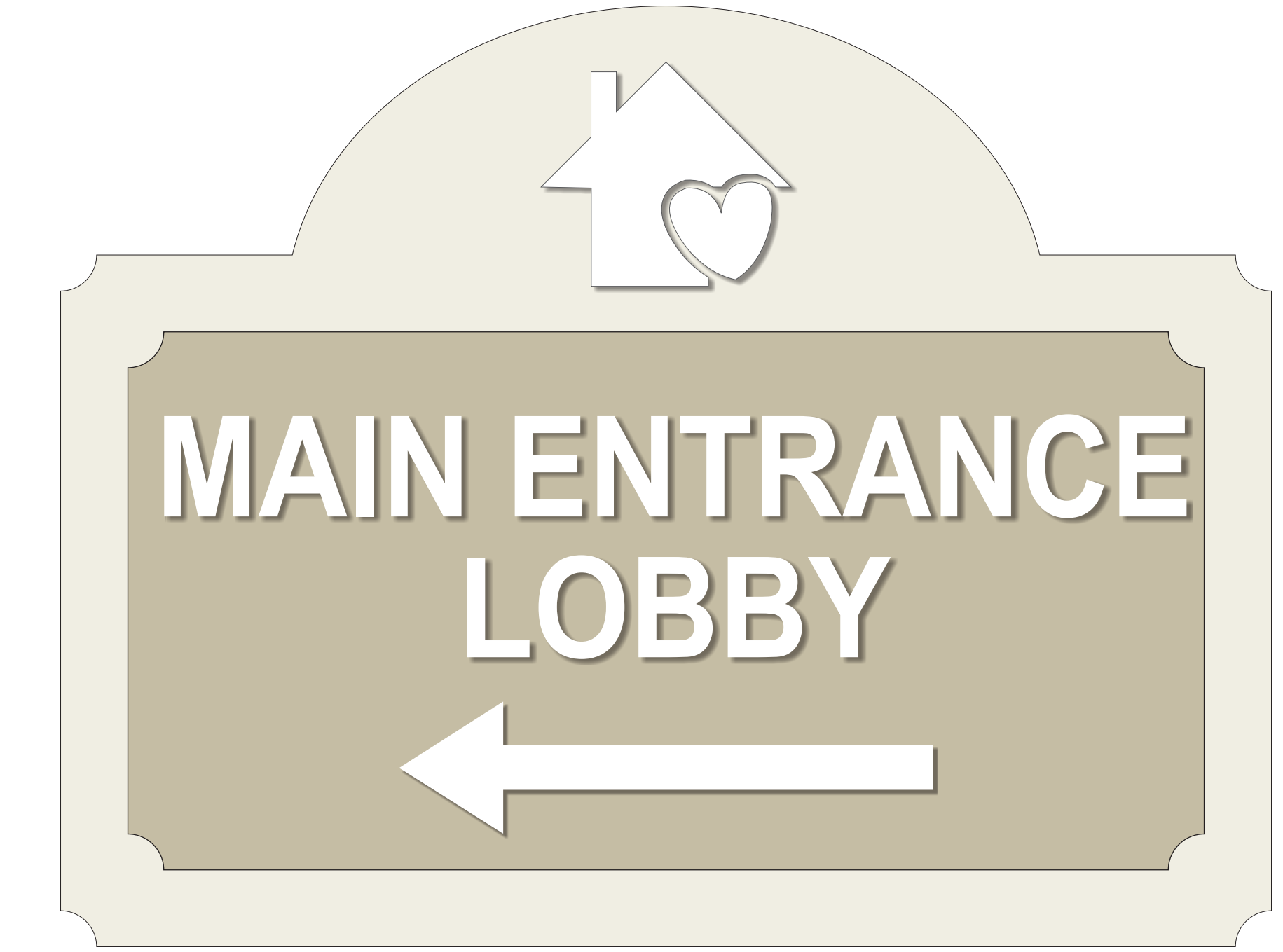
This sign package was used for a seniors facility in the Florida Panhandle. The designer used a neutral color combination that included a raised logo on the custom shaped 214 Ash backer.

The suite signs had a space for a 1 x 6" insert under a non-glare window. We also supplied exit and egress signs for the stairwells using the 805 Candlewick face.

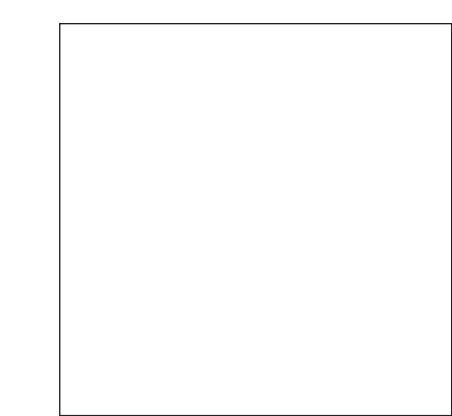
Emergency Exit plans were digitally printed with the facility floor plan.



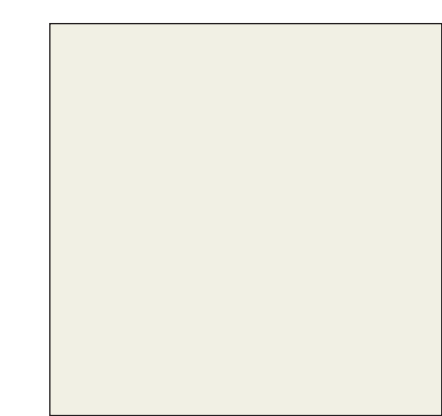
7 x 5.44 SUITE ID SIGN
with clear matte cover
over 1 x 6" insert



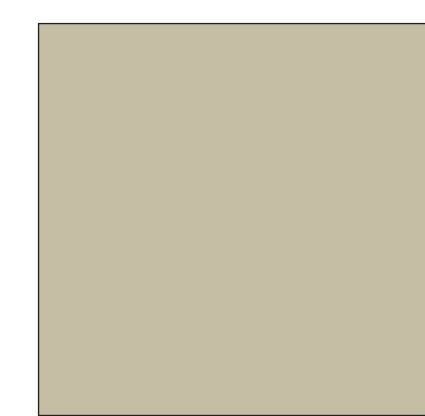
9 x 7 x .125" Room Identification and Directional Signs



204
Bright White
0-0-0-0
PMS TRANS. WHITE



214
Ash
3-3-6-7
PMS WARM GREY 1C

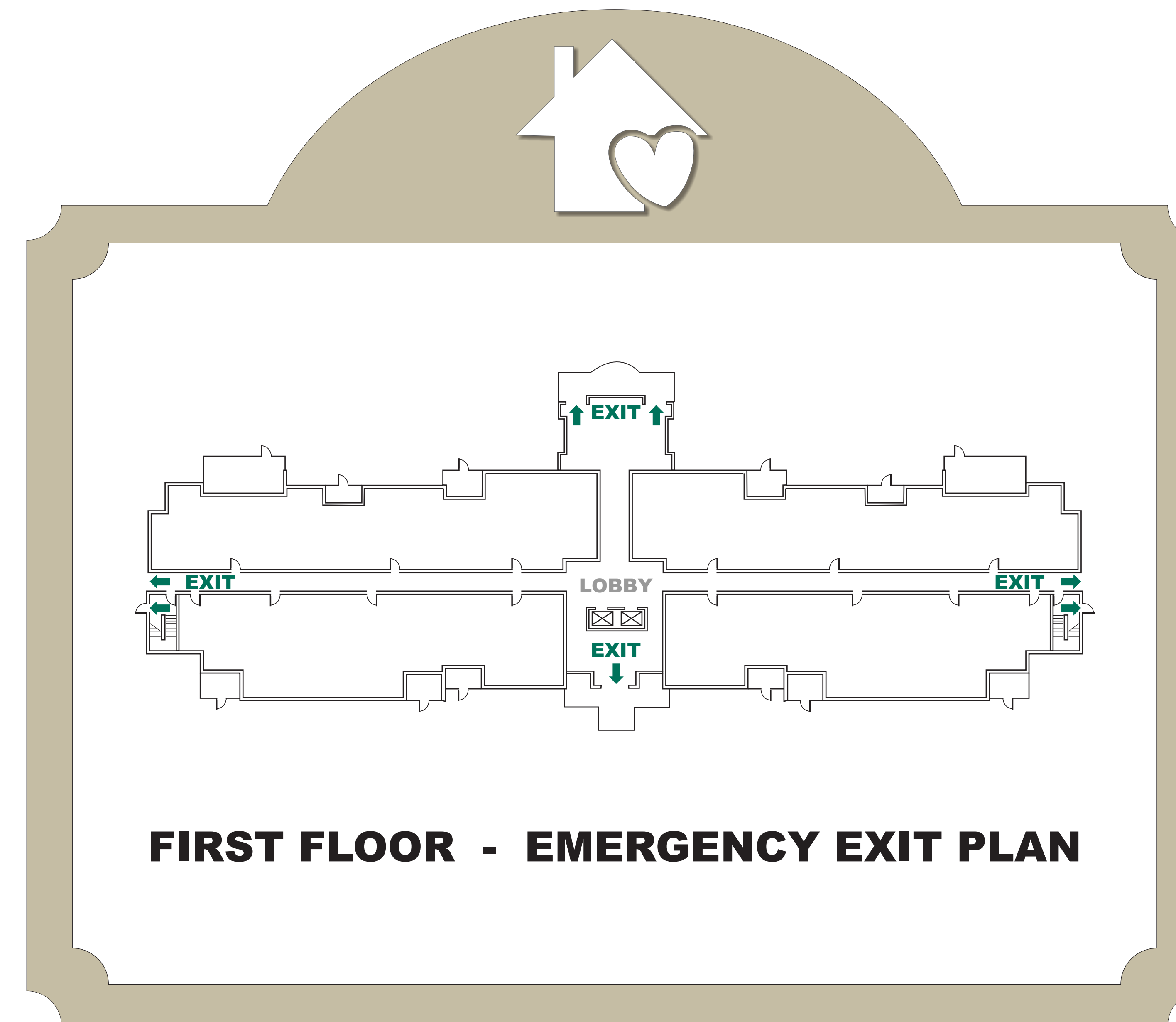


805
Candlewick
5-10-17-16
PMS 7528



6.625 x 9 x .125" Restroom and Stairwell Signs

5 X 3 X .125"
Exit Sign



14.75 x 12.75 Emergency Exit Sign



12 x 16 x .125" Stairwell Egress Sign